

Description

IR switcher design for Pixim DPS Sensor (RGB type or CMY type) .
The switcher with day mode filter performed higher quality image
Also night mode optical glass allows higher light transmission .

Features

- DC gear box motor to extracted 3mm or 4 mm higher filter and glass .
- Long life cycle .
- For DPS box camera C mount design (Includes RGB Sensor or CMY Sensor)
- ROHS compliment .

**Image Reference****Specification**

Electrical Feature (Input Voltage)	
Rated Voltage ,Filter Traveling	3.3V constant Regulated
Rated Current ,Filter Traveling	50mA
Starting Voltage ,Filter start traveling	3.3V
Starting Current ,Filter start traveling	80mA

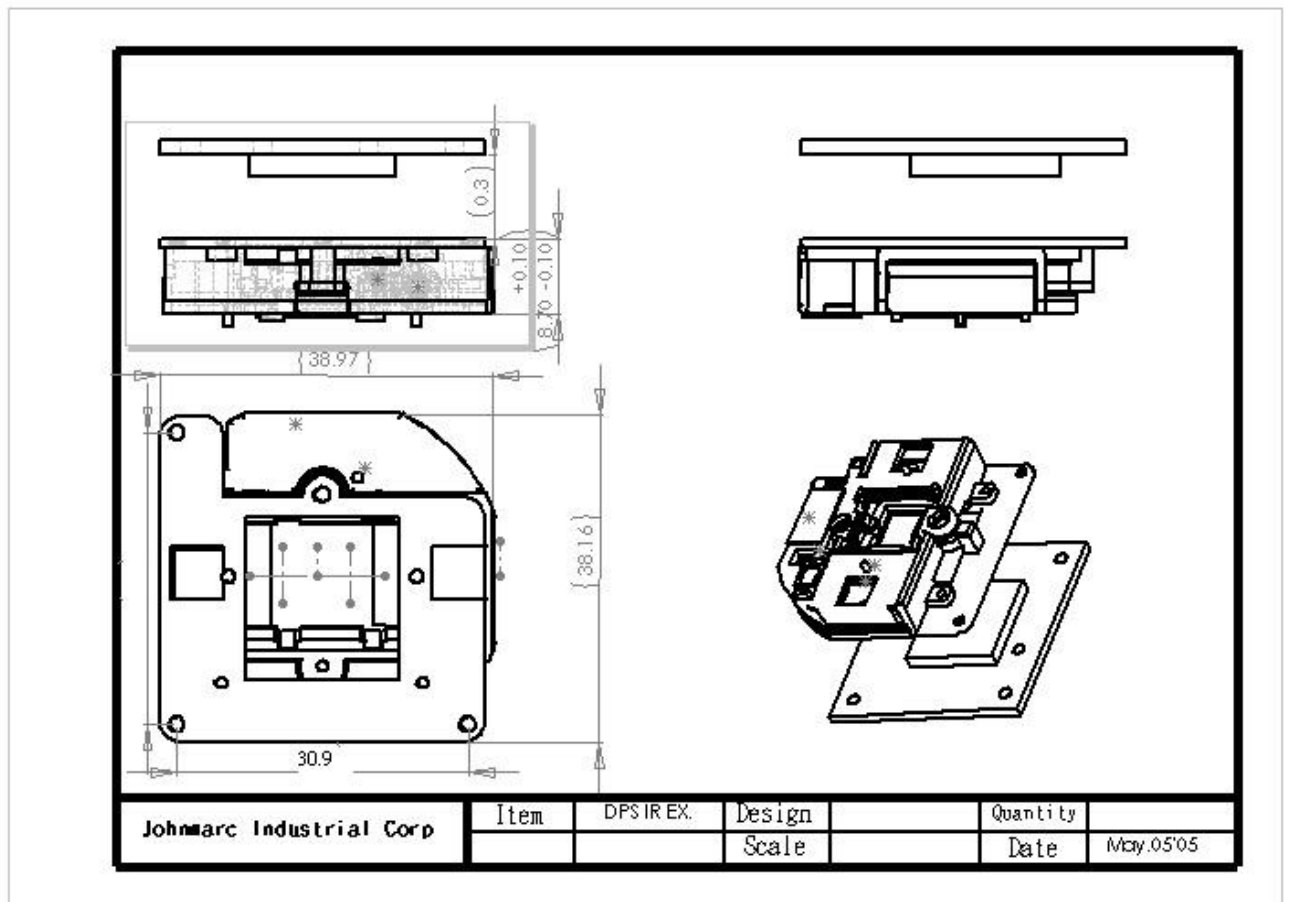
■Mechanical Feature (Refer to the mechanical drawing for the details)	
IR Filter Dimension Max.	WxDxH 8.2x8.8x3mm
Travel Distance	10mm
Travel Time	500ms
Color	Black
Net Weight	9g

■Environment Specification	
Operating Temperature	-10 ~ +55
Storage Temperature	-10 ~ +60
Humidity	20% to 80% RH

JOHNMARC

OPTICS FOR IMAGE

IR SWITCHER / IREX-DPS-C



Specifications are subject to changes for improvement without advance notice.
 Caution: This product specification is a TENTATIVE EDITION. Its mechanical dimension, layout and electro-optical properties may be revised to improve product quality and reliability.

07-20-2006

Version of 1.1

JOHNMARC INDUSTRIAL CORP.
 TEL: +886-2-26592008
 FAX: +886-2-26270508